

---

# Admissions & First-Year Cohort

---

Contents:

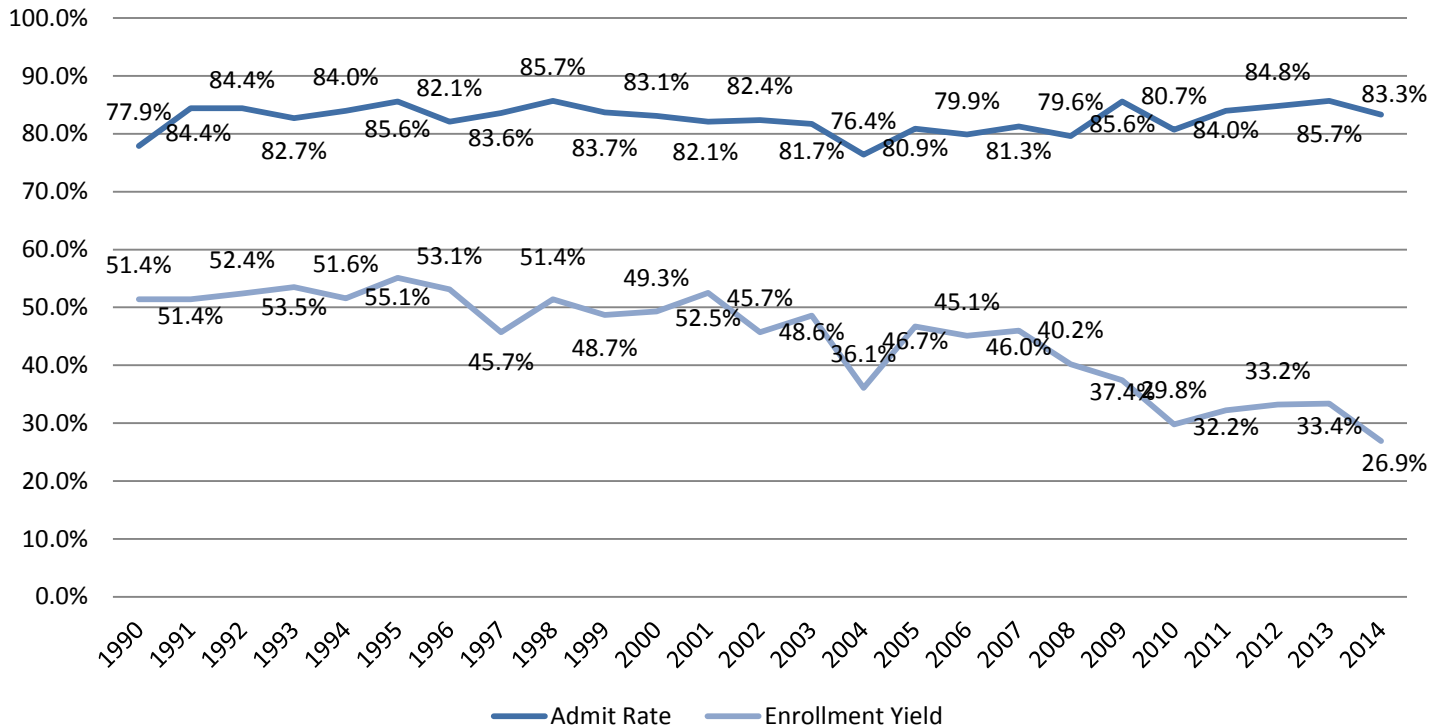
- Pg. 8: Record of Applications and Admissions
- Pg. 9: Full-Time, First-Time Student Diversity
- Pg. 10: High School and Academic Profile
- Pg. 11: Admissions Profile: SAT Scores
- Pg. 12: Admissions Profile: ACT Scores
- Pg. 13: Full-Time, First-Time Student State of Origin

### Record of Applications and Admissions Twenty-Five Cohort Years

Year of Admission	Total Applications	Completed Applications	Number Admitted	Admit Rate	Number Enrolled	Enrollment Yield
1990	1030	1004	802	77.9%	412	51.4%
1991	883	858	745	84.4%	383	51.4%
1992	889	863	750	84.4%	393	52.4%
1993	888	853	734	82.7%	393	53.5%
1994	907	877	762	84.0%	393	51.6%
1995	819	791	701	85.6%	386	55.1%
1996	792	759	650	82.1%	345	53.1%
1997	867	837	725	83.6%	331	45.7%
1998	920	884	788	85.7%	405	51.4%
1999	1041	992	871	83.7%	424	48.7%
2000	1068	1008	888	83.1%	438	49.3%
2001	1011	931	830	82.1%	436	52.5%
2002	997	930	822	82.4%	376	45.7%
2003	1014	926	828	81.7%	402	48.6%
2004	1269	1147	969	76.4%	350	36.1%
2005	997	932	807	80.9%	377	46.7%
2006	1181	1033	944	79.9%	426	45.1%
2007	1281	1143	1041	81.3%	479	46.0%
2008	1422	1265	1132	79.6%	455	40.2%
2009	1357	1247	1162	85.6%	435	37.4%
2010	1387	1204	1119	80.7%	333	29.8%
2011	1453	1320	1220	84.0%	393	32.2%
2012	1482	1359	1256	84.8%	417	33.2%
2013	1529	1430	1310	85.7%	437	33.4%
2014	1687	1566	1406	83.3%	378	26.9%

Source: Institutional Research: Banner Census Extract

#### Admit Rate and Enrollment Yield Trending

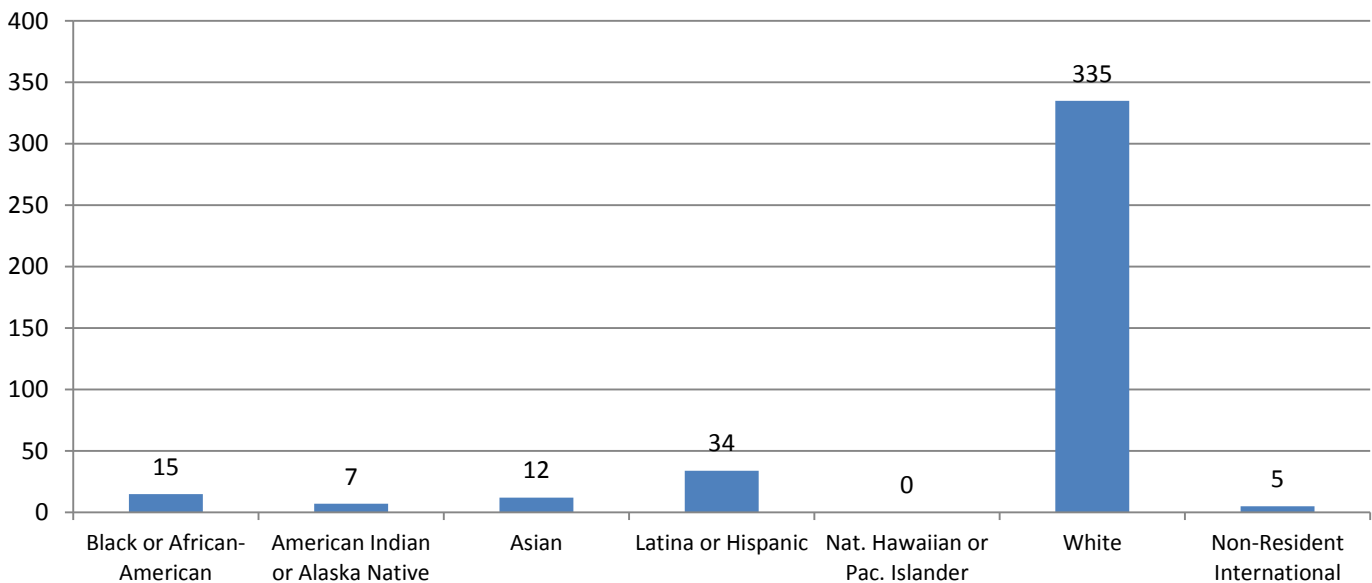


**First-Time, Full-Time Student Diversity  
Ten Cohort Years**

	2005	2006	2007	2008	2009*	2010	2011	2012	2013	2014
<b>Race/Ethnicity</b>										
Black or African-American	1	11	4	6	6	9	5	4	6	8
American Indian or Alaska Native	1	2	3	2	1	0	0	0	0	0
Asian	9	8	5	12	8	10	2	5	7	8
Latina or Hispanic	21	20	32	31	46	27	34	49	63	34
Native Hawaiian or Pac. Islander*	-	-	-	-	0	1	0	0	0	0
Two or More Races*	-	-	-	-	4	8	9	11	16	12
<b>Racial/Ethnic Minority Total</b>	<b>32</b>	<b>41</b>	<b>44</b>	<b>51</b>	<b>65</b>	<b>55</b>	<b>50</b>	<b>69</b>	<b>92</b>	<b>62</b>
Racial/Ethnic Minority Percent	8.5%	9.6%	9.2%	11.2%	14.9%	16.5%	12.7%	16.5%	21.1%	16.4%
Race/Ethnicity Unknown	7	7	13	17	21	8	17	17	17	6
Race/Ethnicity Unknown Percent	1.9%	1.6%	2.7%	3.7%	4.8%	2.4%	4.3%	4.1%	3.9%	1.6%
White	337	377	421	382	345	268	318	324	321	305
White Percent	89.4%	88.5%	87.9%	84.0%	79.3%	80.5%	80.9%	77.7%	73.5%	80.7%
<b>Total U.S. Citizens/Nationals</b>	<b>376</b>	<b>425</b>	<b>478</b>	<b>450</b>	<b>431</b>	<b>331</b>	<b>385</b>	<b>410</b>	<b>430</b>	<b>373</b>
Non-Resident International	1	1	1	5	4	2	8	7	7	5
Non-Resident Int. Percent	0.3%	0.2%	0.2%	1.1%	0.9%	0.6%	2.0%	1.7%	1.6%	1.3%
<b>Grand Total</b>	<b>377</b>	<b>426</b>	<b>479</b>	<b>455</b>	<b>435</b>	<b>333</b>	<b>393</b>	<b>417</b>	<b>437</b>	<b>378</b>
<b>Religious Affiliation</b>										
Roman Catholic	81.4%	74.2%	78.2%	76.3%	78.9%	77.2%	78.4%	82.0%	78.7%	81.2%
Protestant/Other Christian	8.5%	10.3%	8.0%	9.0%	9.7%	11.1%	11.1%	8.4%	10.3%	8.8%
Non-Christian Faith	0.8%	0.9%	0.4%	0.4%	0.7%	0.3%	1.0%	0.2%	0.5%	1.3%
None	0.5%	0.5%	0.2%	1.3%	0.7%	0.6%	0.8%	1.2%	2.1%	2.6%
Unknown/No Response	8.8%	13.9%	13.2%	13.8%	9.9%	10.8%	8.7%	8.2%	8.4%	6.1%

\*Fall 2009 marked the conversion to the new IPEDS race/ethnicity categories. Information is reported first as to whether a student identifies as Latina, then whether she is multiracial. Lastly race is reported. New categories were added in this year.

**2014 Cohort Racial/Ethnic Diversity**



Note: Students are able to select more than one race and totals will not sum to total number of students in cohort.

**High School and Academic Profile  
Ten Cohorts**

Year of Admission:	2005	2006	2007	2008	2009	2010	2011	2012	2013	2014
<b>Total First-Time, Full-Time</b>	<b>377</b>	<b>426</b>	<b>479</b>	<b>455</b>	<b>435</b>	<b>333</b>	<b>393</b>	<b>417</b>	<b>437</b>	<b>378</b>
<b>Rank in High School Class</b>										
Top 10%	31.8%	32.3%	32.4%	35.2%	37.7%	28.2%	31.4%	35.7%	27.4%	34.5%
Top 25%	66.1%	67.0%	65.1%	69.4%	65.9%	66.0%	68.6%	72.8%	57.1%	61.6%
Top 50%	93.8%	92.7%	94.2%	95.7%	92.9%	90.2%	92.9%	93.8%	90.4%	93.8%
Rank Unavailable	104	139	204	174	183	145	183	193	218	201
<b>High School GPA</b>										
3.75 or higher	44.1%	48.4%	47.2%	48.2%	48.5%	44.0%	48.5%	53.0%	44.6%	49.7%
3.50 to 3.74	22.5%	22.1%	23.2%	22.2%	21.6%	20.5%	22.2%	21.8%	22.4%	26.5%
3.25 to 3.49	19.6%	16.7%	18.0%	19.4%	15.6%	19.9%	14.5%	12.7%	18.1%	14.3%
3.00 to 3.24	10.9%	10.8%	10.2%	8.6%	10.1%	11.7%	10.7%	7.7%	11.6%	6.1%
2.50 to 2.99	2.9%	1.9%	1.5%	1.5%	4.1%	3.9%	4.1%	4.8%	3.2%	3.4%
2.00 to 2.49	0.0%	0.0%	0.0%	0.0%	0.0%	0.0%	0.0%	0.0%	0.0%	0.0%
Below 2.00	0.0%	0.0%	0.0%	0.0%	0.0%	0.0%	0.0%	0.0%	0.0%	0.0%
<b>Average High School GPA</b>	<b>3.65</b>	<b>3.70</b>	<b>3.72</b>	<b>3.73</b>	<b>3.71</b>	<b>3.67</b>	<b>3.70</b>	<b>3.75</b>	<b>3.69</b>	<b>3.75</b>
<b>High School Type</b>										
Public	54.7%	49.4%	39.5%	44.6%	53.7%	54.2%	53.2%	52.5%	55.4%	51.8%
Private	45.3%	50.1%	60.1%	54.9%	44.5%	45.5%	46.3%	46.8%	43.9%	47.9%
Home School	0.0%	0.5%	0.4%	0.5%	1.8%	0.3%	0.5%	0.7%	0.7%	0.3%
<b>Average High School Enrollment</b>	<b>293</b>	<b>285</b>	<b>290</b>	<b>281</b>	<b>306</b>	<b>296</b>	<b>316</b>	<b>284</b>	<b>302</b>	<b>299</b>

Source: Institutional Research: Banner Fall Census Extract

**Accomplishments and Activities of the Class of 2018**

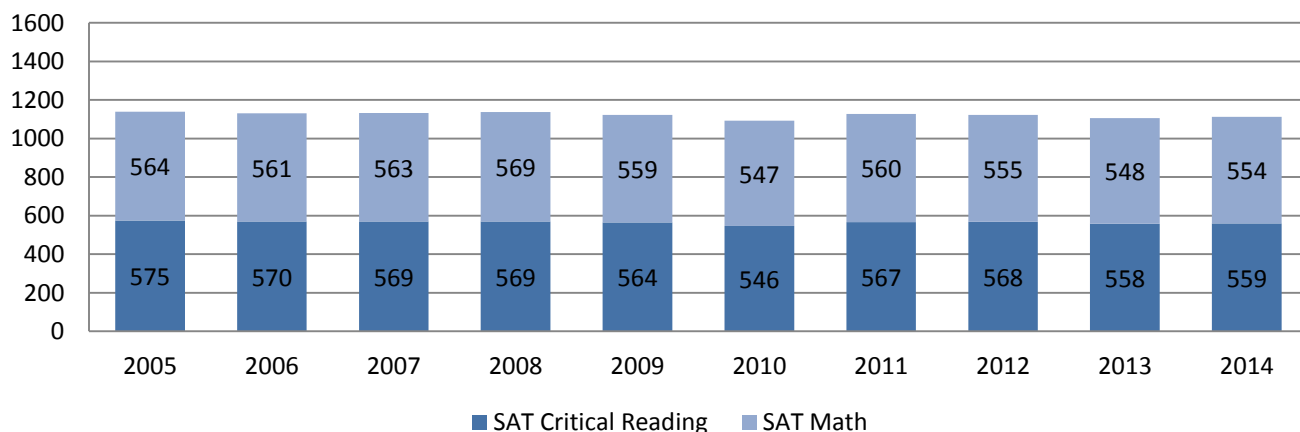
- Six students were senior class presidents.
- More than half of the Class of 2018 were members of the National Honor Society and one was a Commended Scholar.
- Nearly a third of the Class of 2018 served on student government in high school.
- Seven students were involved with their high school television and/or radio stations.
- Five students were involved in 4-H.

### Admissions Profile: SAT Scores Ten Cohorts

Year of Admission:	2005	2006	2007	2008	2009	2010	2011	2012	2013	2014
<b>Total First-Time, Full-Time</b>	<b>377</b>	<b>426</b>	<b>479</b>	<b>455</b>	<b>435</b>	<b>333</b>	<b>393</b>	<b>417</b>	<b>437</b>	<b>378</b>
Total Submitting SAT Scores	279	291	317	281	267	185	203	208	196	176
Percent Submitting SAT Scores	74.0%	68.3%	66.2%	61.8%	61.4%	55.6%	51.7%	49.9%	44.9%	46.6%
<b>SAT Critical Reading</b>										
700-800	5.7%	3.4%	5.4%	4.3%	4.1%	2.2%	6.4%	6.7%	5.6%	1.7%
600-699	32.3%	35.1%	28.4%	32.4%	29.6%	23.8%	29.6%	30.8%	25.5%	30.1%
500-599	47.3%	43.6%	50.2%	49.1%	47.9%	45.9%	44.3%	43.8%	46.4%	48.3%
450-499	10.4%	14.1%	12.0%	11.0%	12.4%	18.4%	12.8%	14.9%	13.3%	10.2%
Below 450	4.3%	3.8%	4.1%	3.2%	6.0%	9.7%	6.9%	3.8%	9.2%	9.7%
SMC Median	570	570	570	570	560	550	570	570	560	560
SMC Mean	575	570	569	569	564	546	567	568	558	559
National Female Mean	505	502	500	499	497	498	495	493	494	495
<b>SAT Mathematics</b>										
700-800	1.8%	2.7%	3.8%	2.8%	3.0%	2.2%	4.9%	4.8%	4.6%	2.3%
600-699	31.5%	29.9%	30.0%	33.5%	27.0%	23.8%	28.1%	29.3%	21.9%	26.1%
500-599	51.6%	48.5%	47.9%	49.1%	50.2%	49.7%	49.3%	42.3%	45.9%	47.2%
450-499	9.0%	14.1%	13.6%	10.0%	15.0%	14.6%	11.8%	13.9%	15.8%	17.6%
Below 450	6.1%	4.8%	4.7%	4.6%	4.9%	9.7%	5.9%	9.6%	11.7%	6.8%
SMC Median	570	560	560	570	560	540	560	560	540	560
SMC Mean	564	561	563	569	559	547	560	555	548	554
National Female Mean	504	502	499	499	498	499	500	499	499	499
<b>SAT Writing</b>										
700-800	--	3.5%	5.0%	6.4%	4.9%	4.9%	5.4%	7.2%	6.1%	2.8%
600-699	--	34.0%	33.1%	35.9%	31.5%	27.0%	31.0%	26.9%	21.4%	29.5%
500-599	--	47.4%	45.1%	42.7%	44.2%	41.1%	47.3%	45.7%	49.0%	44.9%
450-499	--	11.6%	13.2%	11.4%	14.2%	18.9%	11.3%	13.5%	16.8%	14.8%
Below 450	--	3.5%	3.5%	3.6%	5.2%	8.1%	4.9%	6.7%	6.6%	8.0%
SMC Median	--	570	570	580	570	550	560	560	550	560
SMC Mean	--	571	575	580	566	556	569	565	556	558
National Female Mean	--	502	499	499	498	497	496	494	493	492

Source: College Board Online; Institutional Research: Banner Fall Census Extract

### Average SAT Composite Distribution

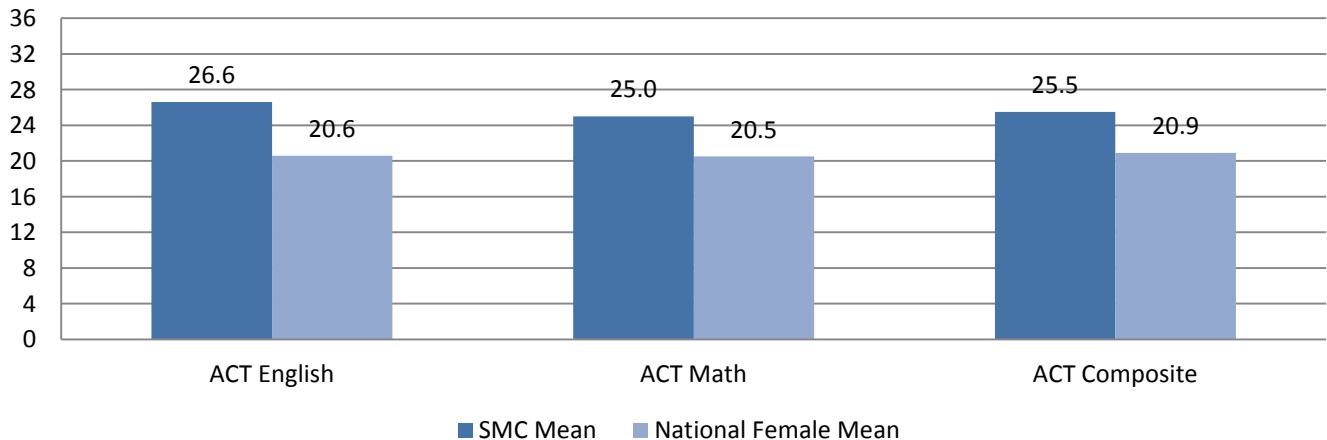


**Admission Profile: ACT Scores  
Ten Cohorts**

Year of Admission:	2005	2006	2007	2008	2009	2010	2011	2012	2013	2014
<b>Total First-Time, Full-Time</b>	<b>377</b>	<b>426</b>	<b>479</b>	<b>455</b>	<b>435</b>	<b>333</b>	<b>393</b>	<b>417</b>	<b>437</b>	<b>378</b>
Total Submitting ACT Scores	253	300	351	322	314	243	279	306	336	276
Percent Submitting ACT Scores	67.1%	70.4%	73.3%	70.8%	72.2%	73.0%	71.0%	73.4%	76.9%	73.0%
<b>ACT English</b>										
30-36	19.8%	20.3%	18.8%	23.9%	26.8%	28.0%	21.9%	29.4%	30.1%	27.5%
24-29	52.2%	48.7%	49.6%	49.1%	42.4%	42.0%	51.6%	49.0%	44.3%	48.6%
18-23	26.9%	28.3%	28.5%	25.5%	27.7%	26.7%	24.4%	19.0%	21.7%	21.4%
12-17	1.2%	2.7%	3.1%	1.6%	3.2%	3.3%	2.1%	2.6%	3.6%	2.5%
Below 11	0.0%	0.0%	0.0%	0.0%	0.0%	0.0%	0.0%	0.0%	0.3%	0.0%
SMC Median	26.0	26.0	25.0	26.0	26.0	26.0	26.0	27.0	26.0	26.0
SMC Mean	25.9	25.8	25.6	26.4	26.3	26.3	26.2	26.9	26.6	26.6
National Female Mean	20.8	21.0	21.0	21.0	20.9	20.8	20.9	20.9	20.6	20.7
<b>ACT Mathematics</b>										
30-36	7.9%	6.3%	5.4%	8.7%	9.2%	10.7%	10.8%	5.9%	9.2%	8.7%
24-29	51.0%	54.0%	50.1%	56.2%	51.9%	48.6%	48.0%	57.5%	51.8%	62.0%
18-23	38.3%	36.0%	38.7%	32.9%	34.4%	34.6%	36.2%	32.0%	33.0%	26.1%
12-17	2.8%	3.7%	5.7%	2.2%	4.5%	6.2%	5.0%	4.6%	6.0%	3.3%
Below 11	0.0%	0.0%	0.0%	0.0%	0.0%	0.0%	0.0%	0.0%	0.0%	0.0%
SMC Median	24.0	24.0	24.0	25.0	25.0	25.0	24.0	25.0	25.0	25.0
SMC Mean	24.2	24.1	23.7	24.6	24.5	24.3	24.3	24.4	24.4	25.0
National Female Mean	20.2	20.3	20.4	20.4	20.4	20.5	20.6	20.6	20.5	20.5
<b>ACT Composite</b>										
30-36	7.9%	9.3%	7.7%	9.3%	11.8%	9.1%	10.4%	14.1%	13.7%	14.5%
24-29	57.3%	54.3%	52.1%	60.2%	55.1%	57.6%	53.0%	59.5%	53.3%	53.6%
18-23	34.8%	35.3%	38.2%	29.8%	31.9%	32.5%	35.5%	25.2%	30.7%	31.5%
12-17	0.0%	1.0%	2.0%	0.6%	1.3%	0.8%	1.1%	1.3%	2.4%	0.4%
Below 11	0.0%	0.0%	0.0%	0.0%	0.0%	0.0%	0.0%	0.0%	0.0%	0.0%
SMC Median	25.0	25.0	24.0	25.0	25.0	25.0	25.0	25.0	25.0	25.0
SMC Mean	24.9	24.8	24.4	25.2	25.1	25.0	24.9	25.5	25.2	25.5
National Female Mean	20.9	21.0	21.2	21.0	21.1	20.9	21.0	21.0	20.9	20.9

Source: ACT National Score Reports; Institutional Research: Banner Fall Census Extract

**2014 First-Time, Full-Time Mean ACT Scores**



**Full-Time, First-Time Student State of Origin  
Ten Cohort Years**

	2005	2006	2007	2008	2009	2010	2011	2012	2013	2014
<b>Primary Market States</b>										
Illinois	54	87	93	66	73	58	77	77	110	87
Indiana	99	103	123	124	133	94	93	96	99	105
Michigan	62	74	67	69	59	53	62	73	76	61
Ohio	36	27	43	33	34	30	29	28	20	23
<b>Subtotal</b>	<b>251</b>	<b>291</b>	<b>326</b>	<b>292</b>	<b>299</b>	<b>235</b>	<b>261</b>	<b>274</b>	<b>305</b>	<b>276</b>
<i>% of Total</i>	<i>66.6%</i>	<i>68.3%</i>	<i>68.1%</i>	<i>64.2%</i>	<i>68.7%</i>	<i>70.6%</i>	<i>66.4%</i>	<i>65.7%</i>	<i>69.8%</i>	<i>73.0%</i>
<b>Secondary Market States</b>										
California	9	11	18	13	17	10	15	32	20	20
Florida	15	7	15	12	7	6	5	10	15	3
Minnesota	11	8	16	11	7	6	9	5	8	3
Missouri	6	2	2	6	7	3	1	3	2	2
New Jersey	5	10	8	11	8	5	11	7	9	6
New York	1	6	2	4	5	3	10	6	5	4
Pennsylvania	14	17	20	24	11	10	10	15	3	3
Texas	8	8	12	7	11	7	9	7	13	6
Wisconsin	12	4	9	12	10	5	9	4	8	2
<b>Subtotal</b>	<b>81</b>	<b>73</b>	<b>102</b>	<b>100</b>	<b>83</b>	<b>55</b>	<b>79</b>	<b>89</b>	<b>83</b>	<b>49</b>
<i>% of Total</i>	<i>21.5%</i>	<i>17.1%</i>	<i>21.3%</i>	<i>22.0%</i>	<i>19.1%</i>	<i>16.5%</i>	<i>20.1%</i>	<i>21.3%</i>	<i>19.0%</i>	<i>13.0%</i>
<b>Tertiary Market States</b>										
Connecticut	1	2	3	1	4	1	4	3	2	3
Georgia	5	4	9	8	9	7	1	6	4	4
Iowa	5	3	2	5	1	4	2	3	3	5
Kansas	3	2	0	3	2	1	2	1	0	0
Kentucky	2	1	6	2	2	3	0	0	0	3
Maryland	1	4	0	1	3	2	2	3	1	5
Massachusetts	2	2	1	2	3	3	1	2	1	1
Tennessee	2	4	3	4	2	1	6	5	1	2
Virginia	3	10	6	3	3	3	3	2	10	6
<b>Subtotal</b>	<b>24</b>	<b>32</b>	<b>30</b>	<b>29</b>	<b>29</b>	<b>25</b>	<b>21</b>	<b>25</b>	<b>22</b>	<b>29</b>
<i>% of Total</i>	<i>6.4%</i>	<i>7.5%</i>	<i>6.3%</i>	<i>6.4%</i>	<i>6.7%</i>	<i>7.5%</i>	<i>5.3%</i>	<i>6.0%</i>	<i>5.0%</i>	<i>7.7%</i>
<b>Other Markets</b>										
Unclassified States	20	28	18	29	21	16	24	22	20	19
International	1	2	3	5	3	2	8	7	7	5
<b>Subtotal</b>	<b>21</b>	<b>30</b>	<b>21</b>	<b>34</b>	<b>24</b>	<b>18</b>	<b>32</b>	<b>29</b>	<b>27</b>	<b>24</b>
<i>% of Total</i>	<i>5.6%</i>	<i>7.0%</i>	<i>4.4%</i>	<i>7.5%</i>	<i>5.5%</i>	<i>5.4%</i>	<i>8.1%</i>	<i>7.0%</i>	<i>6.2%</i>	<i>6.3%</i>
<b>Total</b>	<b>377</b>	<b>426</b>	<b>479</b>	<b>455</b>	<b>435</b>	<b>333</b>	<b>393</b>	<b>417</b>	<b>437</b>	<b>378</b>

Source: Institutional Research: Banner Fall Census Extract, IPEDS Fall Enrollment Report

**Fall 2014 Cohort Market Origin Distribution**

